

FITTINGS

'KESIN' Bellmouth

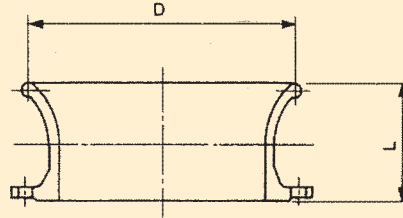


TABLE - 26

Nominal Diameter DN	D	L	Mass	
			PN 10	PN 16
80	150	130	6	6
100	175	135	7	7
150	230	150	10	11
200	290	170	15	15
250	345	185	20	21
300	405	205	29	30
350	460	220	36	38
400	520	240	45	50
450	575	255	54	62
500	635	275	67	80
600	750	310	97	120
700	865	345	135	146
750	925	360	160	172
800	980	380	182	197
900	1095	415	231	250
1000	1210	450	297	331
1100	1325	485	370	405
1200	1440	520	457	512
1400	1670	590	646	702
1500	1785	625	763	851
1600	1900	660	906	995
1800	2130	730	1185	1297

NOTE : Size & Dimensions in **RED** are non standard as per IS-9523 : 2000.